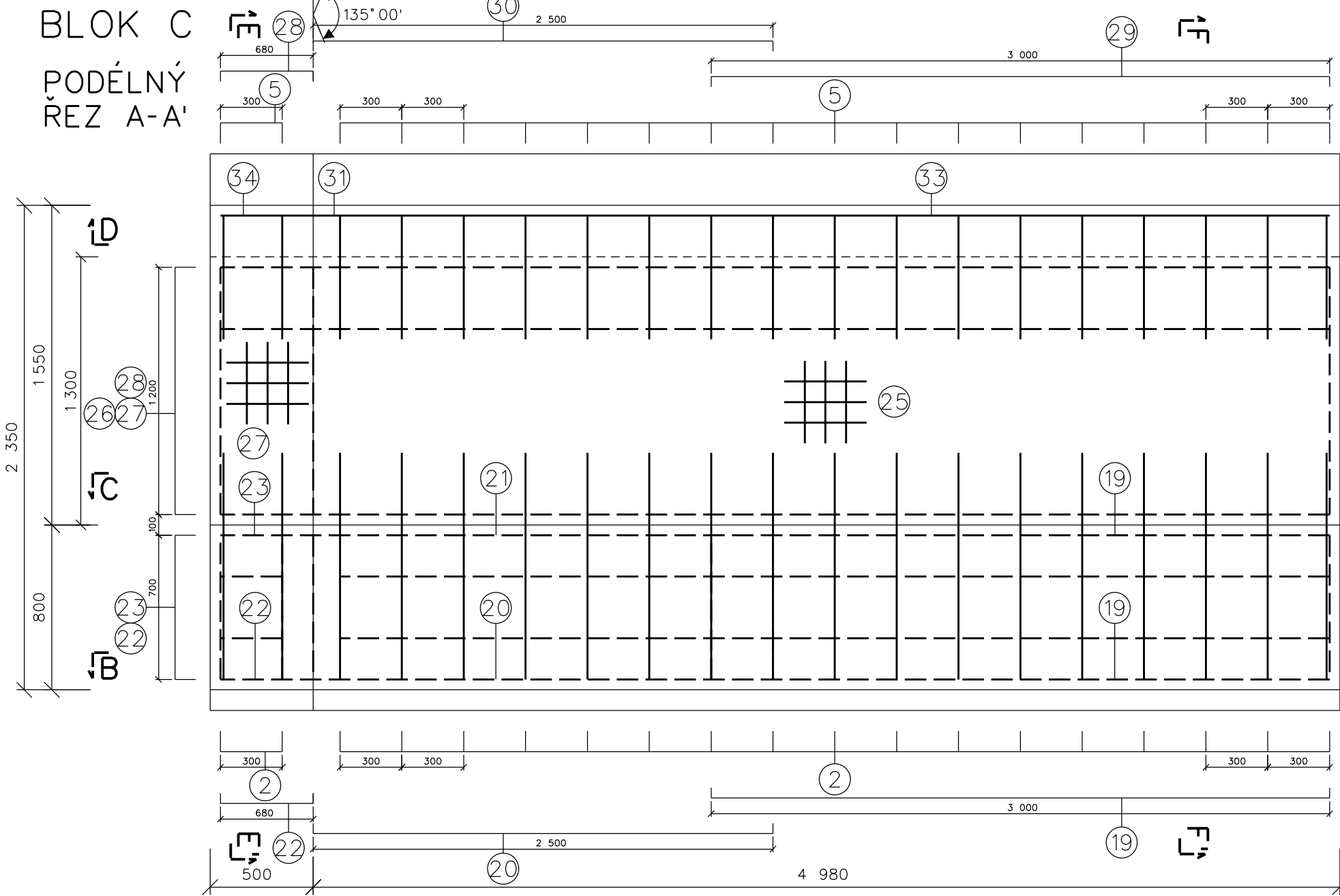


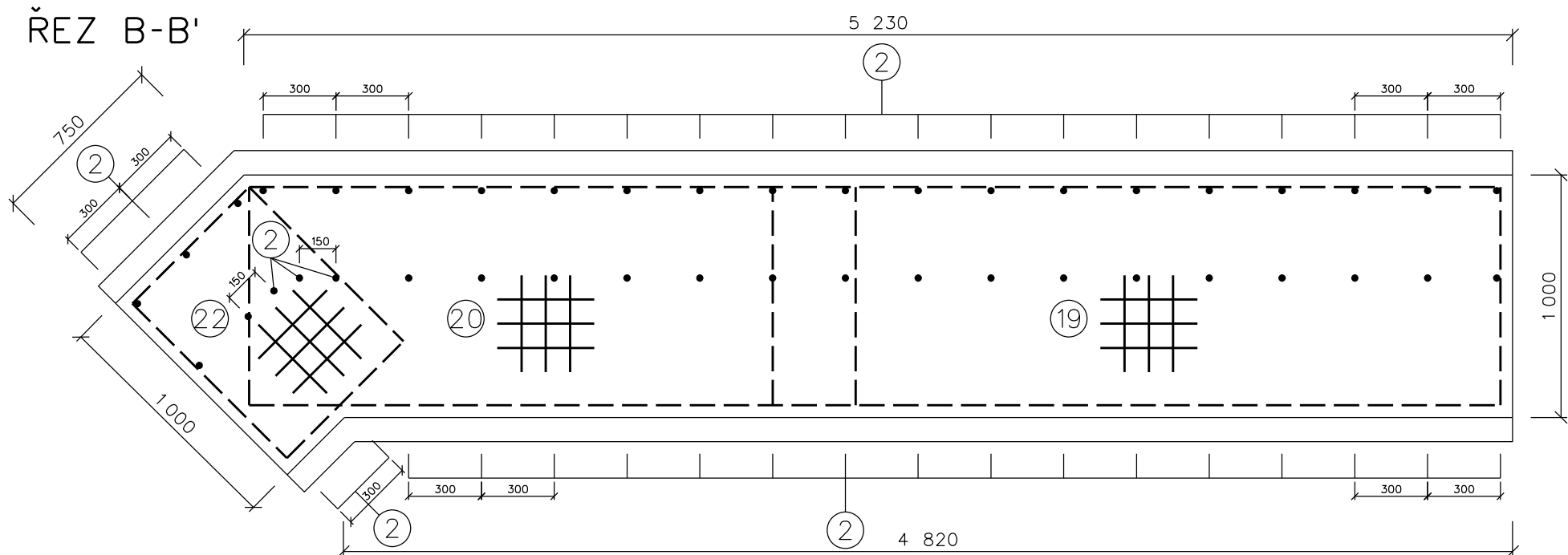
BLOKY BETONOVÉ ZDI - VÝZTUŽ - MĚŘÍTKO 1:25

BLOK C

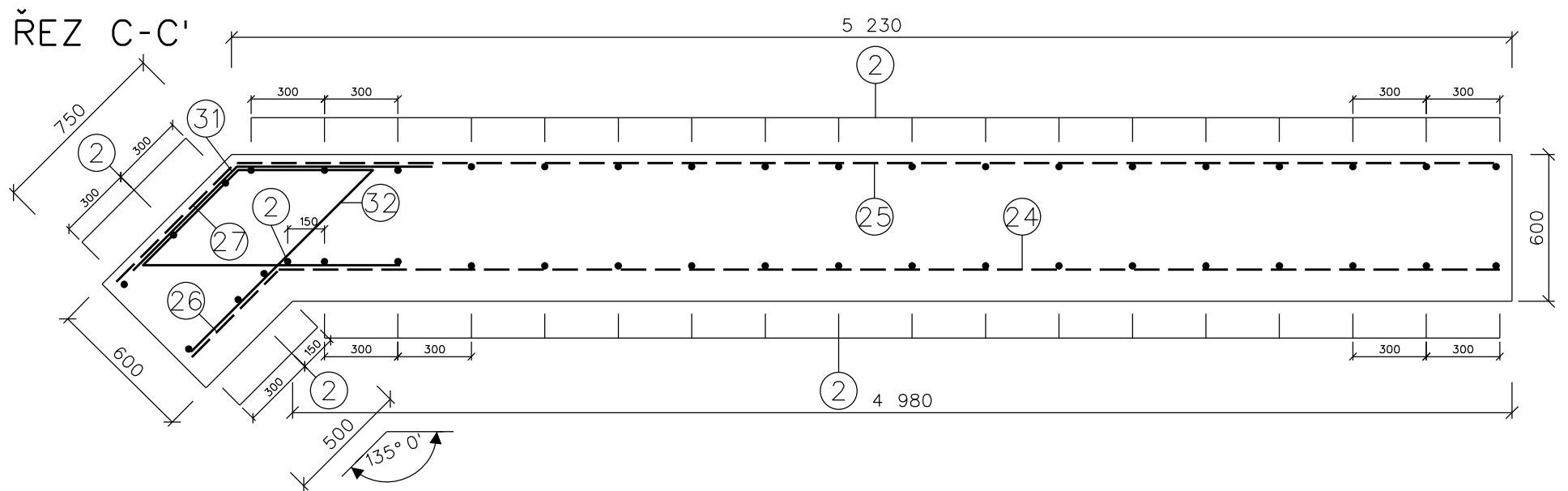
PODÉLNÝ
ŘEZ A-A'



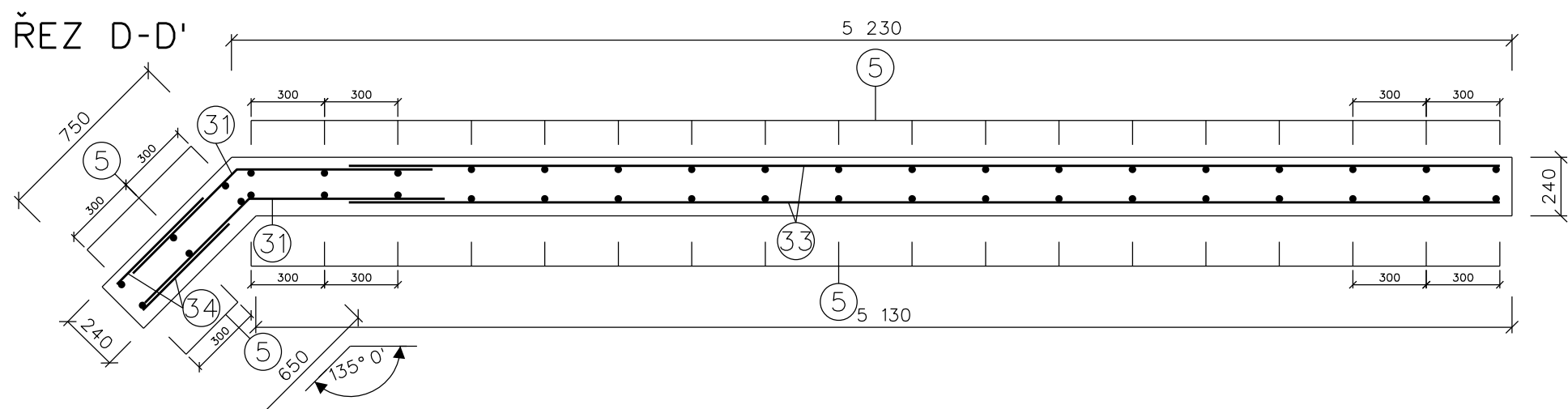
ŘEZ B-B'



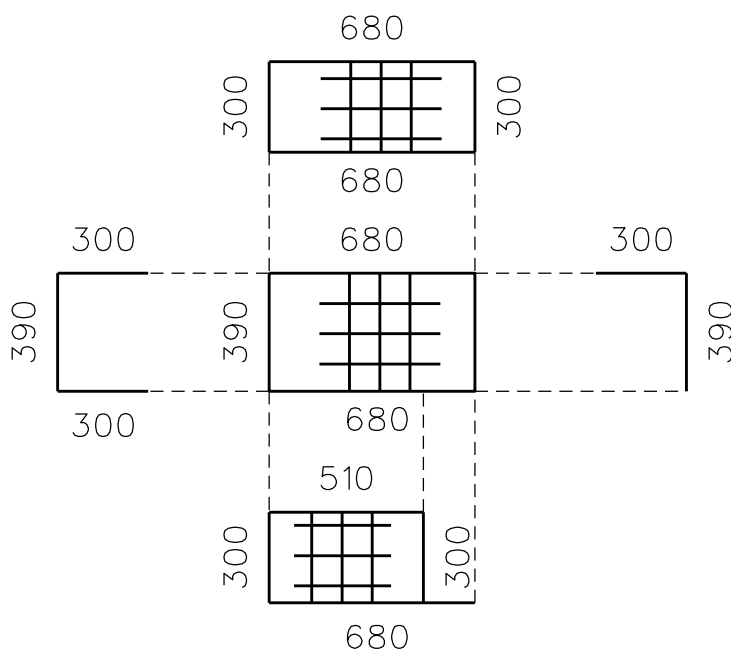
ŘEZ C-C'



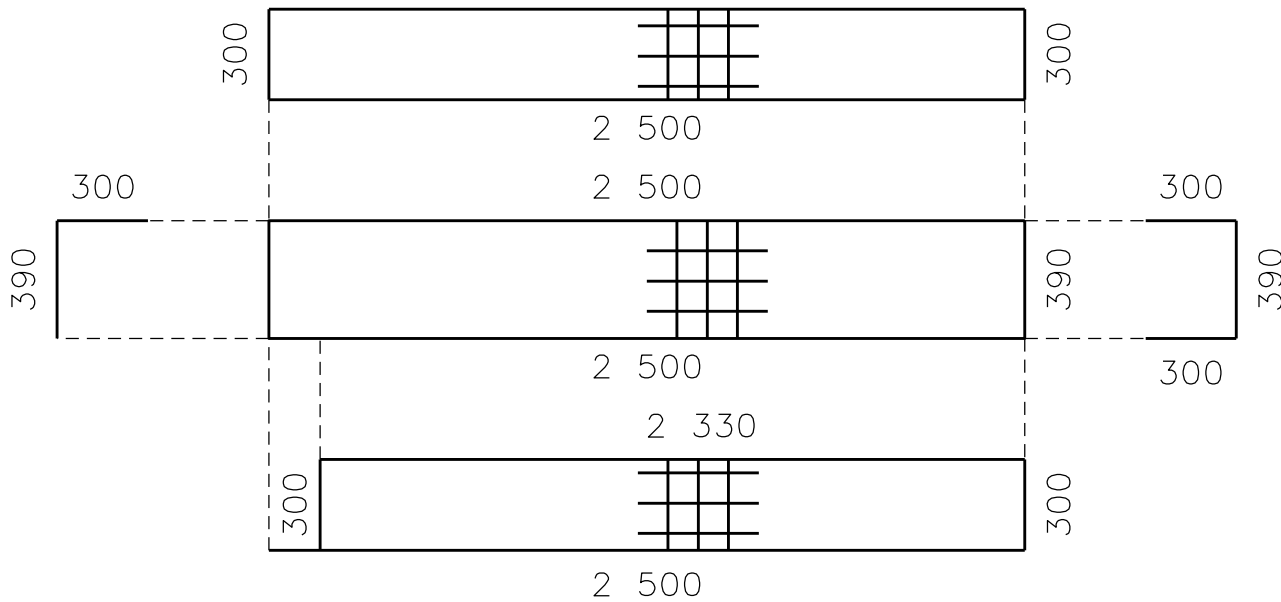
ŘEZ D-D'



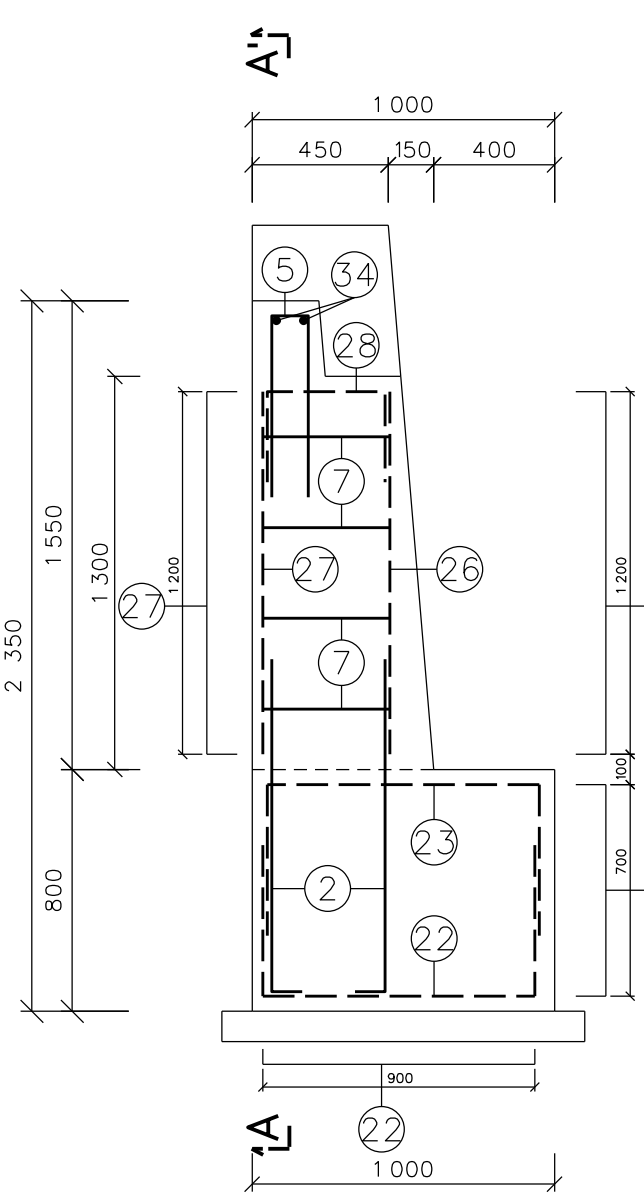
28 KARI SÍŤ 100x100x8 mm, 0,62 m² (990x680 mm)
celkem 1 ks



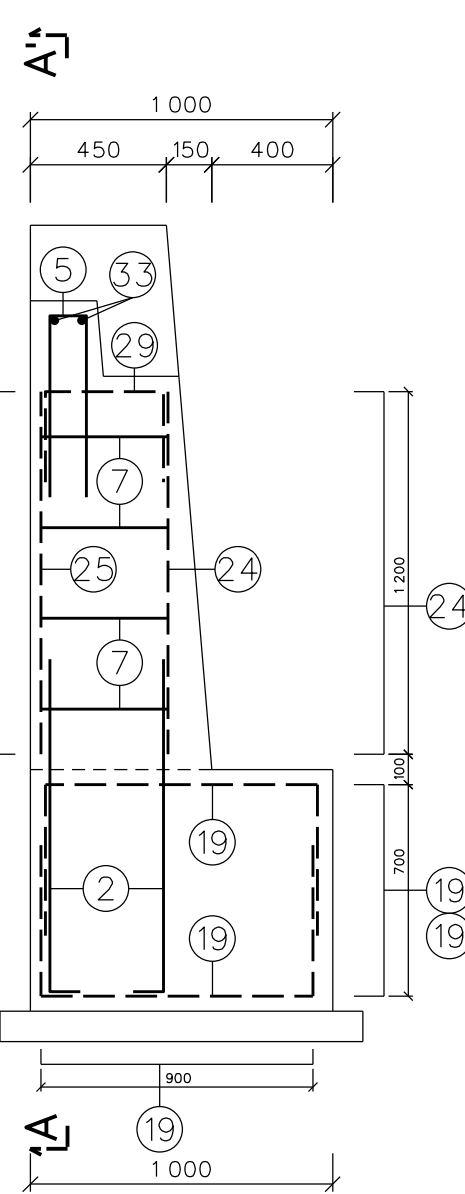
30 KARI SÍŤ 100x100x8 mm, 2,42 m² (990x2500 mm)
celkem 1 ks



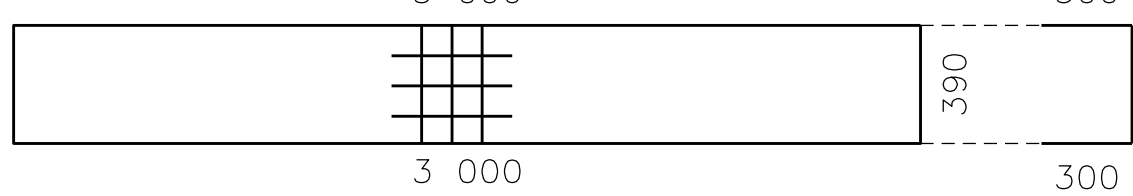
ŘEZ E-E'



ŘEZ F-F'



29 KARI SÍŤ 100x100x8 mm, 2,97 m² (990x3000 mm)
celkem 1 ks



24 KARI SÍŤ 100x100x8 mm, 6,00 m² (1200x5000 mm)
celkem 1 ks

25 KARI SÍŤ 100x100x8 mm, 6,18 m² (1200x5150 mm)
celkem 1 ks

26 KARI SÍŤ 100x100x8 mm, 0,61 m² (1200x510 mm)
celkem 1 ks

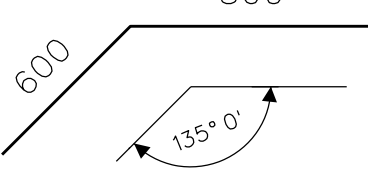
27 KARI SÍŤ 100x100x8 mm, 0,82 m² (1200x680 mm)
celkem 1 ks

5 Ø12 - 1320 mm, ā 300 mm
celkem 21 ks

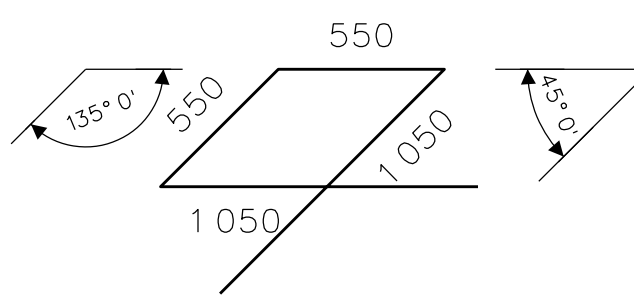
120

600

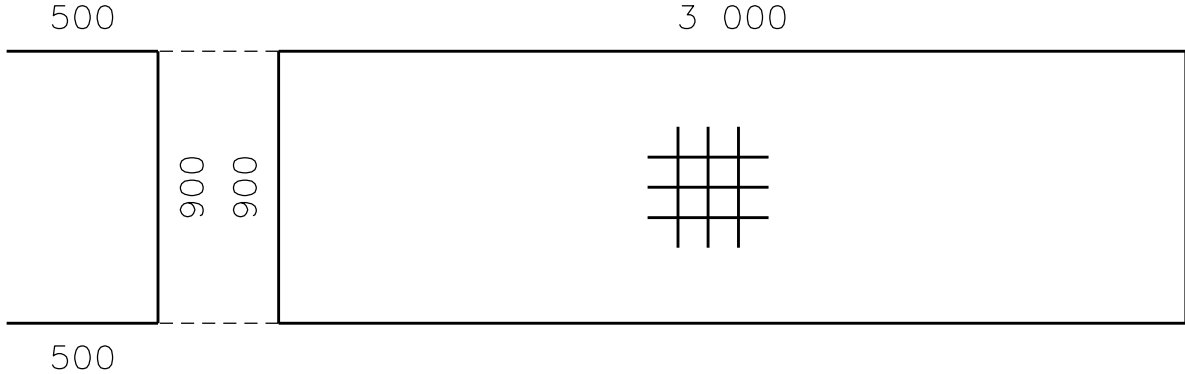
31 Ø12 - 1400 mm, ā 300 mm
celkem 7 ks



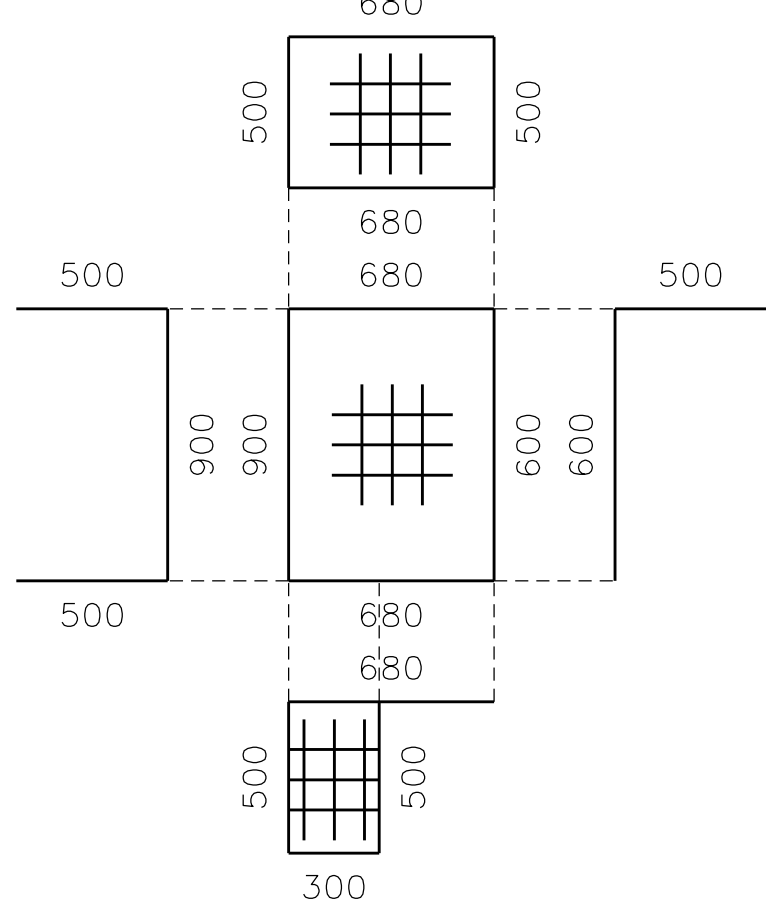
32 Ø12 - 3200 mm, ā 300 mm
celkem 5 ks



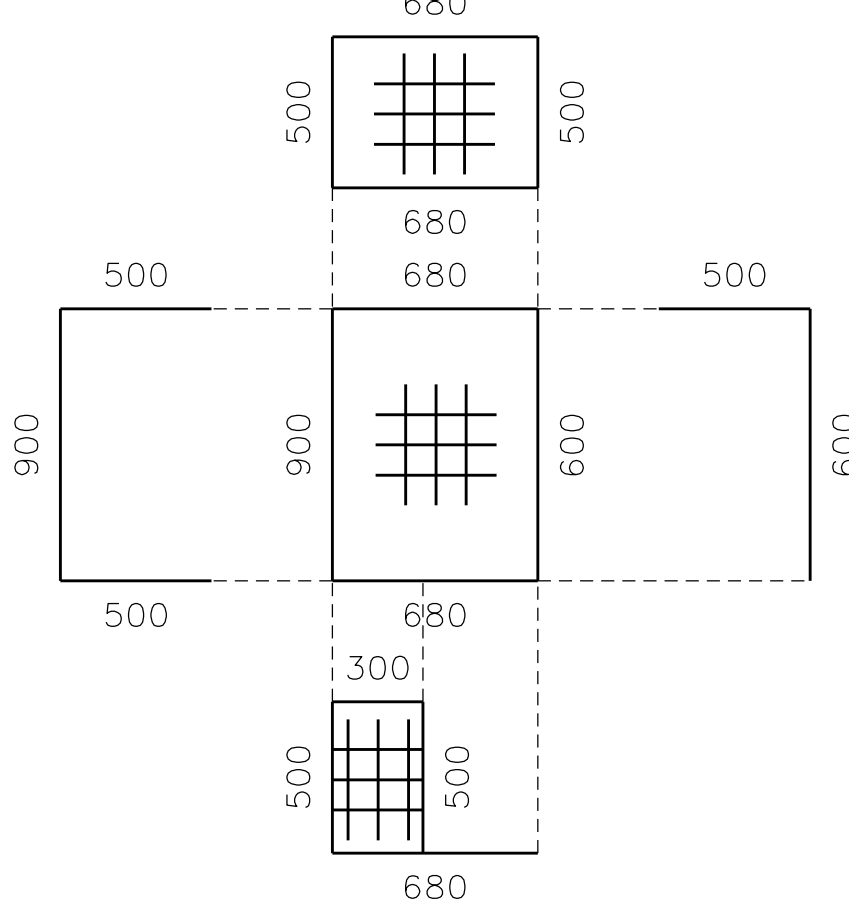
19 KARI SÍŤ 100x100x8 mm, 5,70 m² (1900x3000 mm)
celkem 2 ks



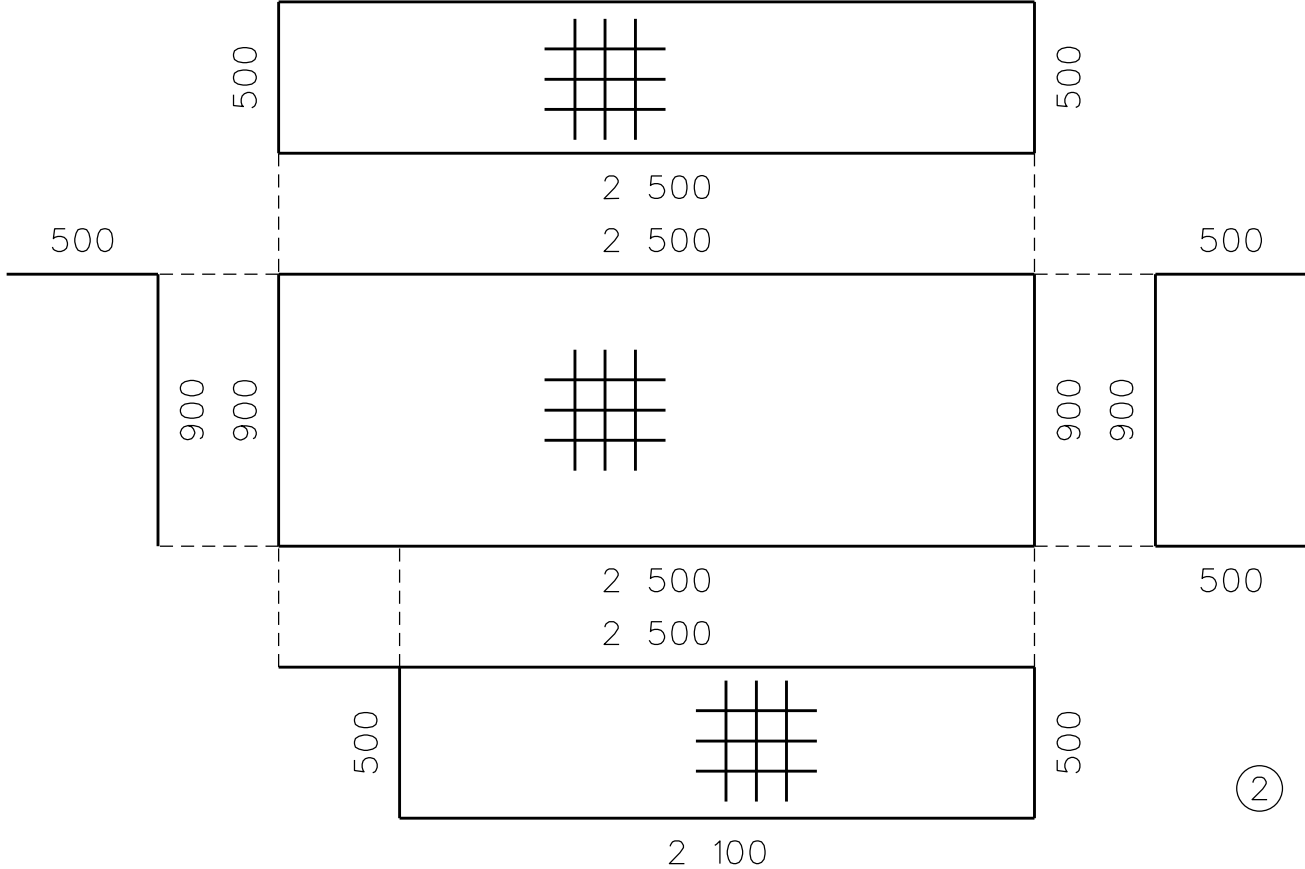
22 KARI SÍŤ 100x100x8 mm, 1,10 m² (1900x680 mm)
celkem 1 ks



23 KARI SÍŤ 100x100x8 mm, 1,10 m² (1900x680 mm)
celkem 1 ks



20 KARI SÍŤ 100x100x8 mm, 4,55 m² (1900x2500 mm)
celkem 1 ks



33 Ø12 - 4700 mm
celkem 2 ks

4 700

34 Ø12 - 500 mm
celkem 2 ks

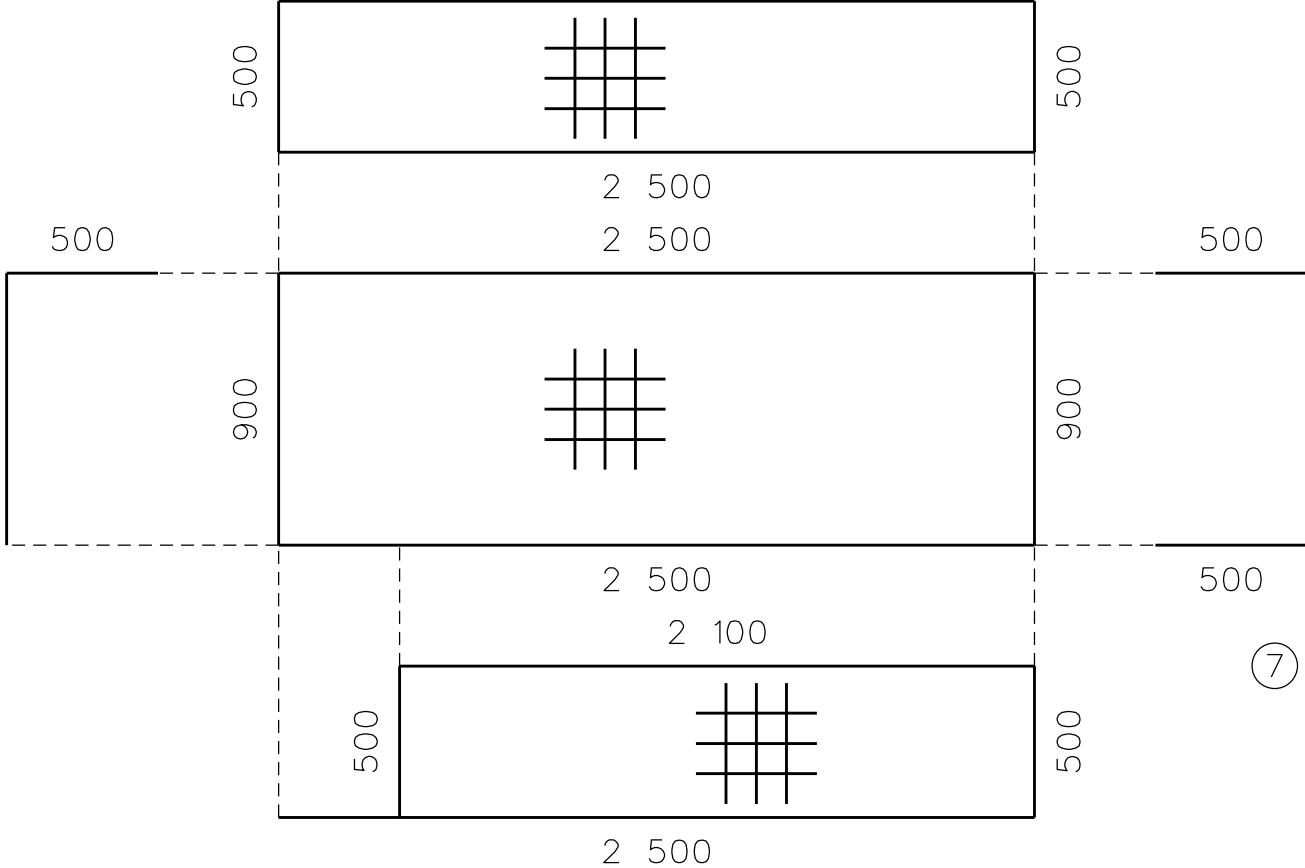
500

2 Ø12 - 1200 mm, ā 300 mm
celkem 42 ks

1 100

100

21 KARI SÍŤ 100x100x8 mm, 4,55 m² (1900x2500 mm)
celkem 1 ks



7 Ø8 - 490 mm
celkem 39 ks

6ks/m2

390

VÝKAZ VÝZTUŽE

| BLOK | OZN. | PRŮMĚR VÝZTUŽE | DĚLKA | PLOCHA | KS NA 1 BLOK | POČET BLOKŮ | DĚLKA CELKEM, PLOCHA CELKEM | | |
|--------------------------------------|------|-------------------|-------|--------|-----------------|----------------|-----------------------------|--------|-----------|
| | | | | | | | B500B | | KARI |
| | | | | | | | 8 | 12 | 100x100x8 |
| C | 2 | 12 | 1200 | | 42 | 1 | | 50,40 | |
| | 5 | 12 | 1320 | | 21 | | | 27,72 | |
| | 7 | 8 | 490 | | 39 | | 19,11 | | |
| | 19 | 100x100x8 | | 5,70 | 2 | | | | 11,40 |
| | 20 | 100x100x8 | | 4,55 | 1 | | | | 4,55 |
| | 21 | 100x100x8 | | 4,55 | 1 | | | | 4,55 |
| | 22 | 100x100x8 | | 1,10 | 1 | | | | 1,10 |
| | 23 | 100x100x8 | | 1,10 | 1 | | | | 1,10 |
| | 24 | 100x100x8 | | 6,00 | 1 | | | | 6,00 |
| | 25 | 100x100x8 | | 6,18 | 1 | | | | 6,18 |
| | 26 | 100x100x8 | | 0,61 | 1 | | | | 0,61 |
| | 27 | 100x100x8 | | 0,82 | 1 | | | | 0,82 |
| | 28 | 100x100x8 | | 0,62 | 1 | | | | 0,62 |
| | 29 | 100x100x8 | | 2,97 | 1 | | | | 2,97 |
| | 30 | 100x100x8 | | 2,42 | 1 | | | | 2,42 |
| | 31 | 12 | 1400 | | 7 | | | 9,80 | |
| | 32 | 12 | 3200 | | 5 | | | 16,00 | |
| | 33 | 12 | 4700 | | 2 | | | 9,40 | |
| | 34 | 12 | 500 | | 2 | | | 1,00 | |
| DĚLKA CELKEM (m); PLOCHA CELKEM (m2) | | | | | | | 19,11 | 114,32 | 42,32 |
| HMOTNOST (kg/m); (kg/m2) | | | | | | | 0,400 | 0,890 | 7,900 |
| HMOTNOST (kg) | | | | | | | 7,64 | 101,74 | 334,33 |
| HMOTNOST CELKEM (kg) | | | | | | | 443,72 | | |

PŘEDPOKLÁDANÝ ROZMĚR KARI SÍTÍ NA JEDEN BLOK C

- 2ks 8/10/2,0x3,0m (KY 49)

- 2ks 8/10/2,15x5m (KY 81)

- 1ks 8/10/2,4x6m (AQ 80)

PŘELOŽENÍSÍŤOVINY min. 300mm

KRYTÍVÝZTUŽE 50mm